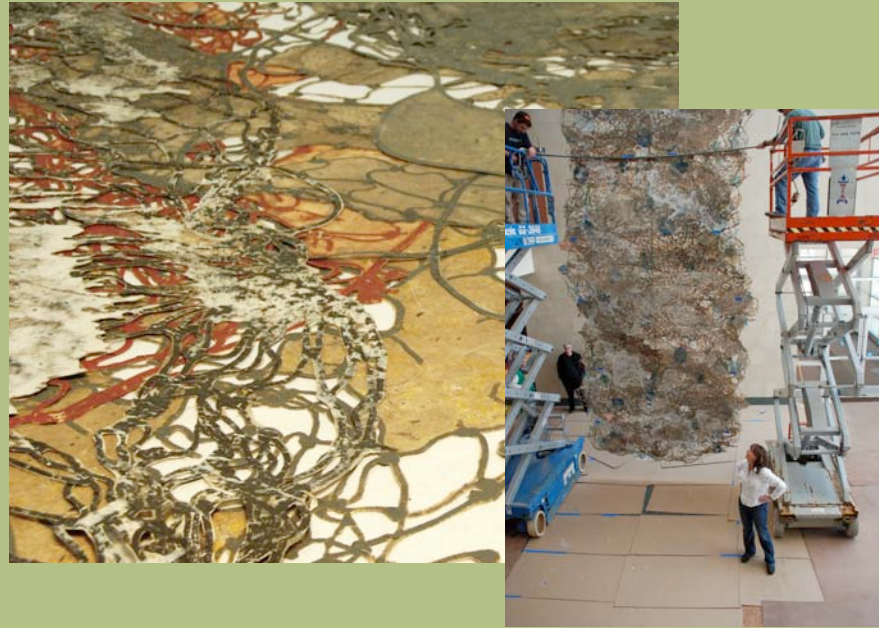


JOAN HALL,
Kenneth E Hudson Professor of Art,
Washington University



"The inspiration for 'The Power of Blue' comes from my interest in protecting the environment, specifically the sea. Experts have said that the world's oceans may harbor the next generation of powerful, healing drugs."

Special Dedication
Issue - April 2008



Nursing Excellence

A PUBLICATION FOR ALUMNI AND FRIENDS OF GOLDFARB SCHOOL OF NURSING AT BARNES-JEWISH COLLEGE

Special Dedication Issue
April 4, 2008

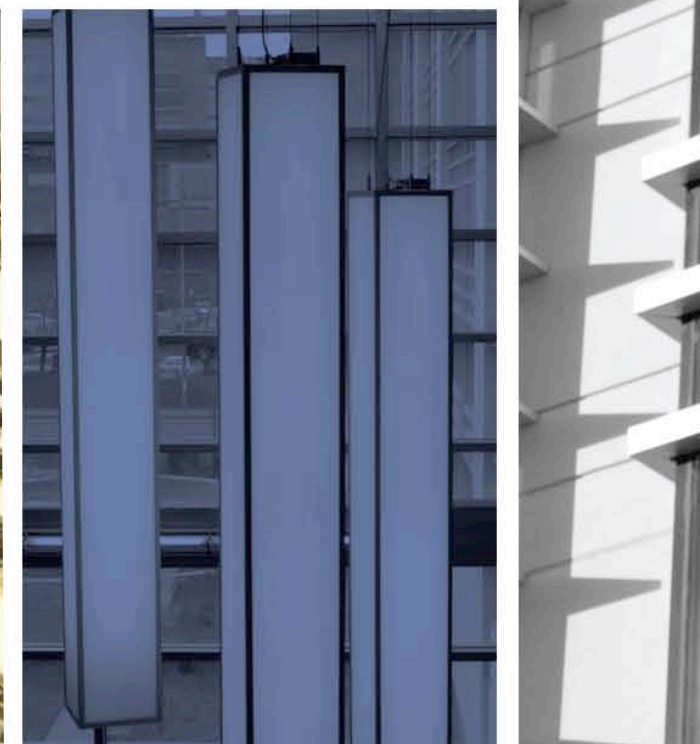
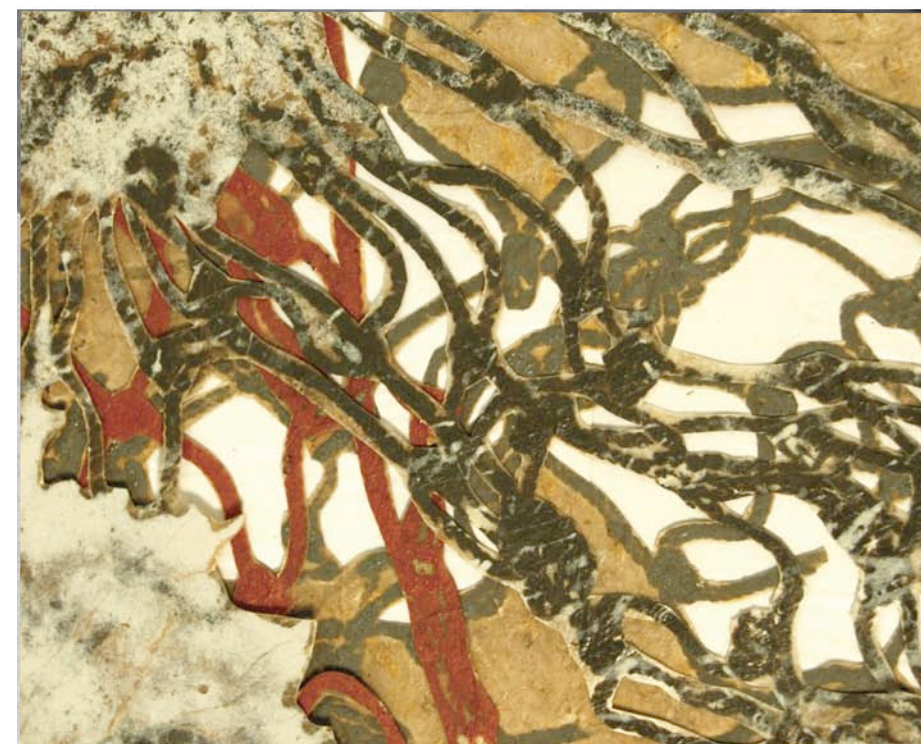
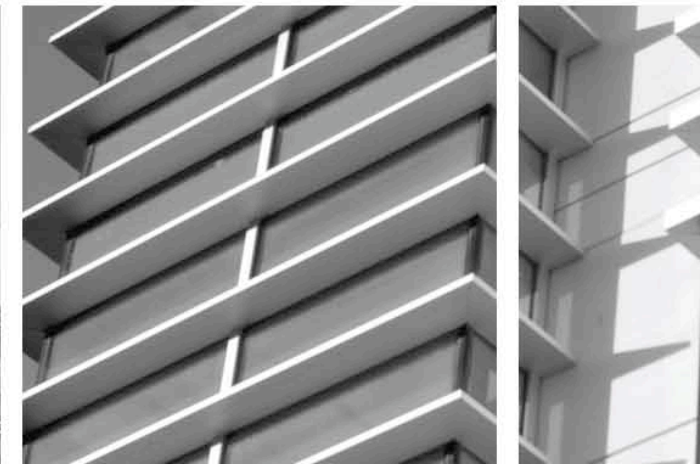
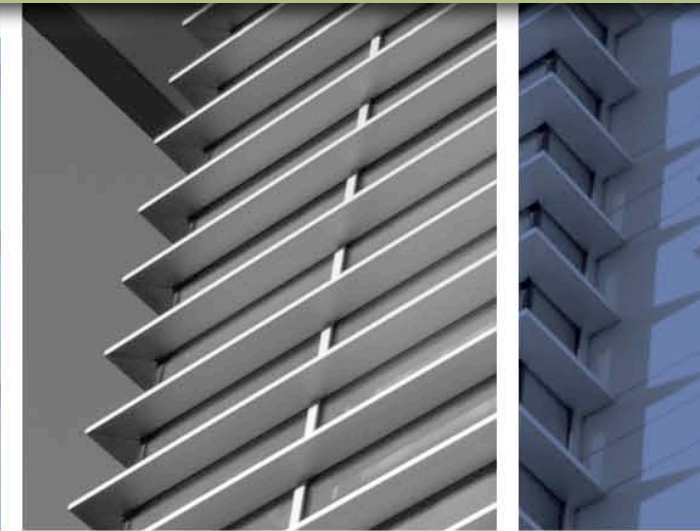
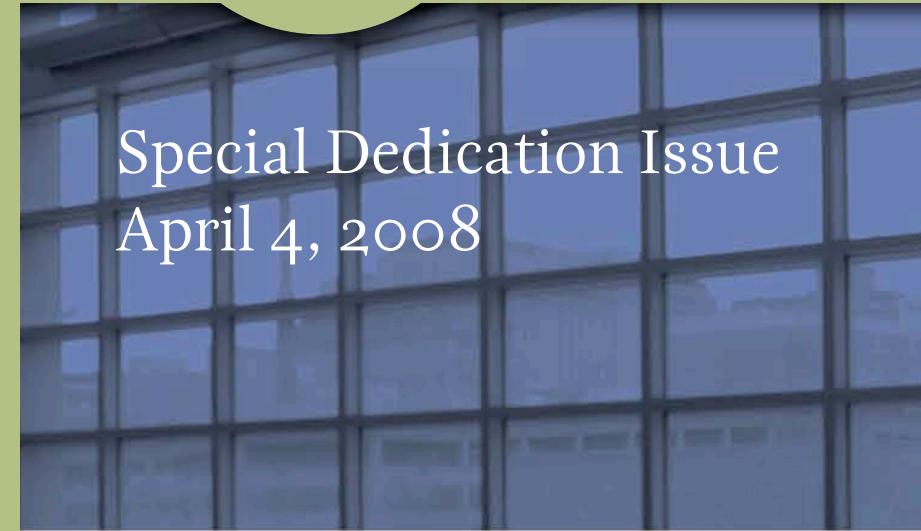
THE ART OF NURSING



Barnes-Jewish College
Goldfarb School of Nursing
Mailstop 90-36-697
4483 Duncan
St. Louis, MO 63110
www.barnesjewishcollege.edu

ADDRESS SERVICE REQUESTED

US NON-PROFIT
POSTAGE
BARNES-JEWISH
HOSPITAL FOUNDATION
PERMIT NO 800
PAID



Special Nursing Excellence Dedication Issue: We're On Our Way



For those of you joining us on this special day of dedication, April 4, 2008, I welcome you. For those who could not be here, I hope this combined program and report will make you feel as much a part of the occasion as possible.

Today we gather to recognize the many contributions that will change the future of nursing education. In particular, I recognize the vision of BJC HealthCare in leading the way with its landmark commitment to launch this amazing project. I also share our gratitude to St. Louis business leader and philanthropist Alvin Goldfarb, whose leadership gift named the Goldfarb School of Nursing and Goldfarb Hall.

These funds and the \$20 million raised by the Barnes-Jewish Hospital Foundation will ensure the resources necessary to fully develop all of our programs. You will find a full campaign report in this edition of *Nursing Excellence*. I am profoundly grateful for every single gift to the campaign.

Indeed, we have already made great progress toward our goal of becoming a top-tier, well-respected school of nursing.

We moved into our spectacular new building, which boasts beautiful architectural features and some of the most advanced facilities available in any college of nursing, anywhere. Our Simulation Institute has just received the great honor of being named a Laerdal Center of Educational Excellence.

We are refining our academic programs, with a renewed focus on integration of research into our baccalaureate and graduate degree programs. We have filled all of our administrative positions with outstanding talent, and we have potential faculty still being interviewed.

Our continuing full-time faculty are enrolled in doctoral programs if they do not already have a doctoral degree. Our research program has begun with many exciting activities and promising early outcomes. Our graduate programs are growing, and planning has begun for the Doctor of Nursing Practice degree program.

Student applications have increased in all of our programs, and we have waiting lists. We have created an Alumni Advisory Council helping to plan exciting ways to involve, to engage and to recognize our thousands of alumni through communications and celebrations.

Goldfarb School of Nursing at Barnes-Jewish College has, over the last year, attracted strong talent into staff roles, into faculty roles, into alumni leadership and into our student programs. We are a magnet that is attracting people who want to learn, people who want to teach and people who want to serve.

Nursing is a lifelong journey of dedication and education. I'm proud to report we're on our way!

Michael L. Evans, PhD, RN, FACHE
Maxine Clark and Bob Fox Dean and Professor
MEvans@bjc.org

"We are refining our academic programs, with a renewed focus on integration of research into our baccalaureate and graduate degree programs.. "

Table of Contents

A Leading View	1&2
School of Nursing Self-Guided Tour	3&4
History of Goldfarb School of Nursing at Barnes-Jewish College	5
Boards of Directors	6
School of Nursing Dedication	7&8
An Investment in Generosity: Alvin Goldfarb	9
A Message From Campaign Chair S. Lee Kling	10
Donors	11-20
The Art of Nursing	21&22

Our Mission:
Goldfarb School of Nursing at Barnes-Jewish College will be among the best schools in the nation by developing educational programs of distinction, advancing knowledge in the nursing profession through research and scholarship, and setting the highest standards for clinical practice and service. Fostering multidisciplinary education for collaborative practice will be a hallmark of excellence. Graduates of the College will be among the best qualified nursing professionals who will provide leadership in the health care delivery system.

On the Cover: The art and architecture, the gifts and generosity, the vision and planning: the future of nursing education. A special *Nursing Excellence* to honor a very special moment.

Managing Editor - Ann Ryan: arm4993@bjc.org

Design: Design Invasion

Photography: Creative Producers Group

Jennifer Crowell

Jay Fram

Suzy Gorman

Kim Humphries

Tim Mudrovic

Tim Parker

Matthew O'Shea

Chris Tobnick

Writing/Editing:

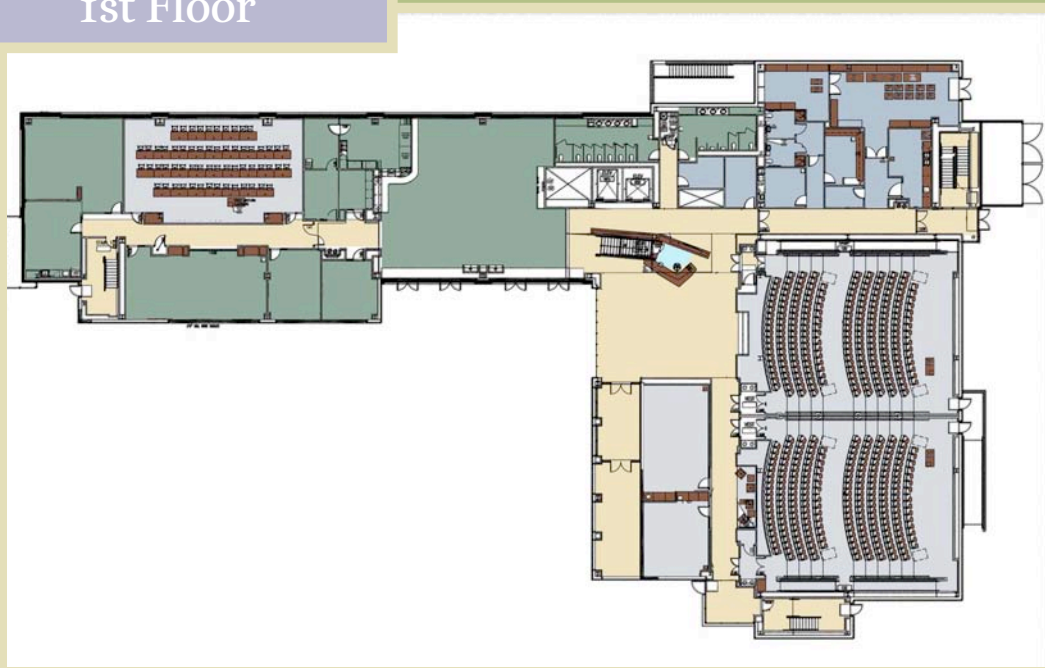
Ann Ryan

Noël Schiber

School of Nursing Self-Guided Tour

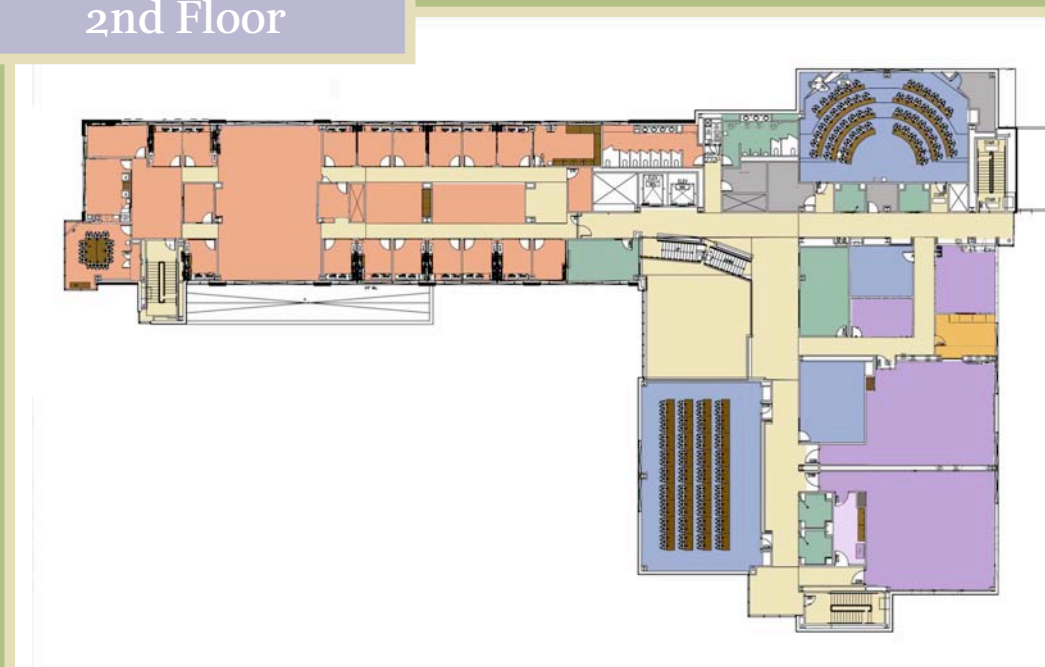
Located on the former site of Dazor Manufacturing, the new Goldfarb Hall stands in the heart of the medical center campus. Its design brilliantly blends technology, space, and beauty to fit the specific needs of a world-class nursing program. The resulting learning environment inspires the best in every student and faculty member who walks through its doors.

1st Floor



- Auditoriums
- Student Commons
- Library
- Computer Lab
- Seminar Rooms

2nd Floor

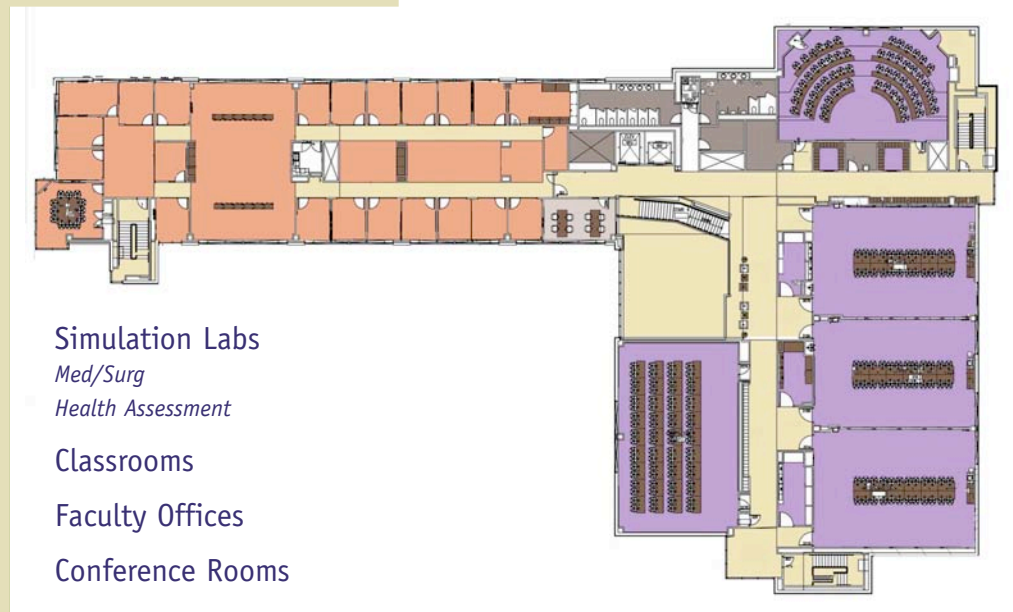


- Simulation Labs
 - Simulation Theater*
 - OR/ Anesthesia*
 - Maternal/Child*
- Classrooms
- Faculty Offices
- Conference Rooms
- Study Hall

At five stories and 105,000 square feet, Goldfarb Hall will more than handle the influx of students. It features 200-seat auditoriums, 60-seat classrooms, seminar rooms and study halls, as well as dedicated suites that, for the first time, encourage and enable on-site faculty research.

From its classrooms to its computer labs, Goldfarb Hall is designed to support the latest technology and to incorporate it effectively and creatively into the

3rd Floor



- Simulation Labs
 - Med/Surg*
 - Health Assessment*
- Classrooms
- Faculty Offices
- Conference Rooms

educational process. Its adaptable infrastructure ensures that this technology will always be the state-of-the-art.

The new facility's sophisticated technology includes six clinical simulation laboratories that replicate real-life situations found on medical, surgical, and pediatric floors; in operating rooms; in procedure areas; and in maternity, neonatal, and critical care units. The labs feature real equipment and supplies, such as pumped-in oxygen for intubation, to make all simulations as real as possible.

The highlight of these labs are human-patient simulators, life-like mannequins that can be programmed to simulate virtually any human vital sign or condition. They blink, breathe, bleed, have a pulse, groan, and can even give birth. Sometimes, they die. It all depends on how the student responds to the computerized scenario controlled by faculty.

Students also have access to an IV simulator to help them learn how to perform this essential procedure on people of all ages and conditions before applying it to real

academic environment will allow our nursing graduates to integrate seamlessly into the care-giving environment.

Becoming a nurse is an intense, draining experience. Students carry with them a burden of responsibility that sets them apart. Key to their success is spiritual refreshment. Goldfarb Hall will provide this by creating an atmosphere that is visually and structurally modern, but full of warmth.

The designers have blurred the line between indoors and outdoors with a glass wall leading into the building's breathtaking atrium lobby. They have taken great care to infuse the entire building with uplifting natural light, while using the latest in building materials to ensure comfort and energy efficiency.

The building's design also enhances school spirit and a strong sense of community among our students and alumni. The facility's garden and patio dining area offer relaxing places where students can meet to escape from the challenges of tests, training and clinicals. Features such as a student lounge, student commons and a dedicated alumni room make the building a place not only to learn, but also to

bond, socialize and network with others who share the call to nursing.

Goldfarb Hall is the backbone to fulfilling our goals for our nursing program and the nursing profession. Building it enables us to house one of the most stimulating, forward-thinking nursing programs in the nation; incorporate the resources to attract top-notch faculty and facilitate their leading-edge research; and educate top students.

patients. The labs provide the technology to record all simulations on DVD so that students can critique their performance with faculty and learn from it.

The simulation labs give students a chance to hone their technical skills while learning to apply and integrate knowledge critically and quickly before they encounter live patients during clinical rotations. Further, the simulations allow students to encounter situations and conditions that they may not see during clinicals. Training within this superior

History of Goldfarb School of Nursing at Barnes-Jewish College

Our legacy began in 1902 with the founding of Jewish Hospital School of Nursing. Dedicated to the tradition of learning and to the value of healthcare without discrimination, it was one of the first schools in the nation accredited by the National League of Nursing. By the early 1990s, the school had expanded to a college offering associate, bachelor and master degrees in nursing and allied health programs.

Barnes Hospital School of Nursing began its own journey in 1955 after Washington University closed its affiliated nursing program. The school eventually lent its name so that its students could earn a four-year bachelor of nursing degree through the Barnes College of Nursing at University of Missouri—St. Louis.

In 2005, the Barnes College name returned to Barnes-Jewish Hospital as it merged the strengths and legacies of both hospital nursing programs into the Barnes-Jewish College of Nursing and Allied Health. At this point, the hospital observed that advances in technology and patient care were rapidly changing the nursing profession.

The hospital made a bold decision to invest in the future of healthcare by transforming our college's teaching, learning and research capabilities in nursing. Other educational institutions absorbed our college's allied health programs as we phased out the associate degree in nursing, and, in 2007, we began a new era in nursing education as the Goldfarb School of Nursing at Barnes-Jewish College.

The campus formed by our college, Barnes-Jewish Hospital, Children's Hospital, Washington University School of Medicine (ranked among the top five medical schools in the nation), and St. Louis College of Pharmacy exposes students to every specialty in healthcare. Ours is one of the only nursing programs nationally in an academic, clinical setting that includes two top 10, Magnet-status hospitals.



Today, our college's bachelor and master degree programs are fully accredited by the highest national authority, the Commission on Collegiate Nursing Education (CCNE). We are accredited regionally by the Higher Learning Commission of the North Central Association of Colleges and Schools (NCA). We have approval from the Missouri Coordinator Board for Higher Education (MCBHE).

Our college is currently one of only ten Laerdal Centers of Educational Excellence, a prestigious group recognized for breaking new ground in nursing education and exhibiting distinction in the field of "helping save lives." Laerdal is the developer of SimMan, the leading patient simulator for nursing and medical school education. Laerdal Centers are held up as examples for designing and implementing exceptional education programs.

With our commitment to fostering the best in technology, curriculum, faculty, students and clinical simulation learning, Goldfarb School of Nursing at Barnes-Jewish College will perpetuate a legacy of helping exceptional people become exceptional nurses.

Board, BJC HealthCare

Paul J. McKee, Jr., Chair
Kathryn S. Bader
Gerald E. Daniels
Arnold W. Donald
John P. Dubinsky
Timothy J. Eberlein, MD
James Fitzsimmons
Gregory A. Fox
Joanne S. Griffin
Keith S. Harbison

John R. Jordan, Jr.
Robert G. Kopitsky, MD
Steven H. Lipstein
Thomas O. McCarthy
Richard H. McClure
John F. McDonnell
Walter L. Metcalfe, Jr.
Gerald W. Moritz, MD
Charles W. Mueller
Robert L. Plummer

W. Joseph Privott, PhD
Donald L. Ross
Craig D. Schnuck
Larry J. Shapiro, MD
Patrick T. Stokes
John P. Stupp, Jr.
Barbara Weaver
Kelvin R. Westbrook
Mark S. Wrighton, PhD

Board, Barnes-Jewish Hospital

Patrick T. Stokes, Chair
Kathryn S. Bader
James C. Bobrow, MD, PhD
Charles W. Burson
Richard A. Chole, MD
Maxine Clark
Arnold W. Donald
John P. Dubinsky
Peter A. Edison
Gregory A. Fox
Joanne S. Griffin
Harvey A. Harris
John R. Jordan, Jr.
Eugene S. Kahn
S. Lee Kling
Ronald J. Kruszewski

John F. McDonnell
Jean Patterson-Neal
Darrell B. Roegner
Craig D. Schnuck
Larry J. Shapiro, MD
Leslie A. Small
David L. Steward
Diane Sullivan
Anthony Thompson
Mark S. Wrighton, PhD
Douglas H. Yaeger

Emeritus Chairs
William H. Danforth, MD
Charles F. Knight
Lee M. Liberman

Emeritus Members
Harold G. Blatt
Andrew B. Craig, III
Julian I. Edison
Benjamin F. Edwards, III
Earle H. Harbison, Jr.
Robert E. Lefton, PhD
Alvin J. Siteman

Ex Officio
Peggy P. Elias
Dorette Goldberg
Steven H. Lipstein
Renee Rosen
Andrew A. Ziskind, MD

Board, Barnes-Jewish Hospital Foundation

S. Lee Kling, Chair
S. Bryan Cook
Thomas R. Corbett
Andrew B. Craig, III
William A. Donius
John P. Dubinsky
Leon A. Felman
Roxanne H. Frank
Susan K. Goldberg
Keith B. Guller
Earle H. Harbison, Jr.
William F. Holekamp
Mark E. Hood
Franklin A. Jacobs
Douglas O. Kirberg
William J. Koman
Edward J. Koplar
Thomas R. Martin

Robert D. Millstone
Sandra M. Moore
Frederick Oertli
Steven C. Roberts
Herbert E. Rosenbaum, MD
Sally H. Roth
Robert E. Saur
Steven F. Schankman
Alvin J. Siteman
Peter A. Smith
Kenneth B. Steinback
Norma E. Stern
Walter G. Stern
Joseph A. Stieven
Kenneth H. Suelthaus
Harvey N. Wallace
Edith L. Wolff
David A. Yawitz
Mark H. Zorensky

Honorary
Shirley W. Cohen
William H. Danforth, MD
Joy Dunkelman
Alyn V. Essman
Harvey A. Friedman
Robert E. Kresko
Lee M. Liberman
Mahlon Rubin
Mary G. Zorensky

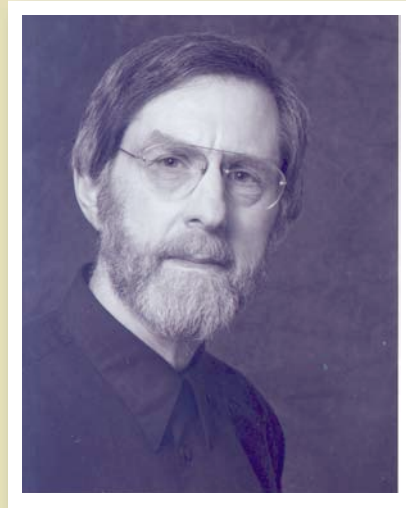
Ex Officio
Peggy P. Elias
Dorette Goldberg
Renee Rosen
Julia S. Ruvelson
Patrick T. Stokes
Andrew A. Ziskind, MD

Board, Goldfarb School of Nursing

Harvey A. Harris, Chair
Maxine Clark
Shirley W. Cohen
Peter A. Edison
Peggy P. Elias
Brenda G. Ernst
Michael L. Evans, PhD, RN
Ronald G. Evens, MD

Dorette Goldberg
Zella M. Harrington
Anna M. Harris
Marlene A. Hartmann
Carolynn Ingerson Hoffman
Edward F. Lawlor, PhD
Sharon O'Keefe
Thomas F. Patton, PharmD

Renee Rosen
Peggy Ross
Larry J. Shapiro, MD
Marcia Shapiro
Norma E. Stern
Donald M. Suggs, DDS
Coreen Vlodarchyk
Andrew A. Ziskind, MD



Dedication Poem

Carl Dennis, Poet

Carl Dennis is the author of ten books of poetry, including most recently, *Unknown Friends* (Penguin 2007). His previous book, *Practical Gods* (Penguin 2001), received the 2002 Pulitzer prize in poetry. A recipient of fellowships from the Guggenheim Foundation and the National Endowment for the Arts, Dennis was awarded the Ruth Lilly Prize from Poetry Magazine and the Modern Poetry Association in 2000 for his contribution to American poetry. He lives in Buffalo, where he is Artist in Residence at the State University of New York. His late mother, Fay Persuk Dennis, graduated from Jewish Hospital School of Nursing in 1931 and his cousin, Paula Langfeld Kaye, is a 1966 Jewish Hospital School of Nursing graduate.

Remnants

From: *Meetings with Time* (Viking Penguin, 1992)

Alpaca blankets, resin, hemp, and coffee
Are still unloaded and loaded at docks
Just as they were eighty years ago
When my mother, newly arrived from Russia,
Holding tight to her mother's skirt,
Stepped ashore, wide-eyed, into the New World.
And other little girls from other countries
Are walking now among crates and bales
While my mother, marooned at the nursing home,
No longer knows the names of her sons.
Where's the soul gone, we wonder among ourselves.
What has it left behind but the few mementos
Shared among us when we closed the apartment?
Dishes and linen boxed for cross-country travel,
Packets of letters she chose to save
For the light they threw on our characters
Or as proof our interests were much like hers.
She must have guessed years back
We'd leave behind the books she treasured—
Accounts of the sufferings of the Jews,
Of Jewish gifts to the planet,
Of the beauties of Jerusalem,
A city she'd have moved to in a minute
After Dad died if one of her three sons
Had been willing to go along.
We wanted the photograph of her nursing class,
St. Louis Jewish Hospital, 1930,
With her at the top, in a circle of her own,
Class president at graduation.
She'd be glad I found her twenty-part poem
Composed on her sister's twentieth birthday,
A celebration of friendship.
Strange she always remembered her girlhood as an idyll—
Trolley trips with her father to the library,
The sweet smell of her mother's baking—
While her sister still dwells on the shame
Of the shabby, cold-water flat they lived in,
How she couldn't bring home a single friend.
Doubtless my mother's habit of affirmation
Rubbed off to some extent on her sons,
Just as it did on the Mexican girl
Who helped for a while with the babies,
Juanita, who wrote me just last year how mother
Was the one teacher who made a difference,
Beginning with the interview. "Juanita," she said,
To the girl sullenly shrugging, "you're too young
To carry a chip around on your shoulder."
Words spoken in a tone that suggested
She'd remembered trying them on herself
And had chosen to give more weight to the moments,
Many or few, when she'd found them helpful.



Keynote Speaker

Beverly Malone, PhD, RN, FAAN
CEO, National League for Nursing



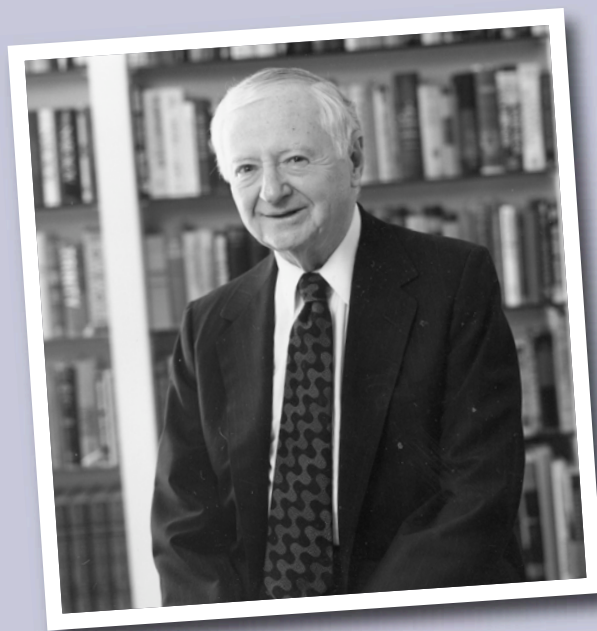
Beverly Malone began her nursing career with a first degree in nursing from the University of Cincinnati in 1970. She combined further study with clinical practice, a master's in psychiatric nursing and she received her doctorate in clinical psychology in 1981.

Her career has mixed policy, education, administration and clinical practice. Dr. Malone has worked as a surgical staff nurse, clinical nurse specialist, director of nursing, and assistant administrator of nursing. During the 1980s she was dean of the School of Nursing at North Carolina Agricultural and Technical State University. In 1996 she was elected for two terms as president of the American Nurses Association (ANA), representing 180,000 nurses in the USA. In 2000, she became deputy assistant secretary for health within the US Department of Health and Human Services, the highest position so far held by any nurse in the US government.

Dr. Malone was general secretary of the Royal College of Nursing (RCN), the United Kingdom's largest professional union of nurses with more than 390,000 members, from June 2001 – January 2007. Dr Malone was also a member of the Higher Education Funding Council for England (HEFCE). She represented the RCN at the pan-European nursing body, the European Federation of Nurses Associations (EFN), the Commonwealth Nurses Federation, and the International Council of Nurses with the RCN president.

In February 2007, Dr. Malone took up her appointment as chief executive officer of the National League for Nursing in New York. Dedicated to excellence in nursing, the NLN is the premier organization for nurse faculty and leaders in nursing education offering faculty development, networking opportunities, testing and assessment, nursing research grants and public policy initiatives to its 20,000 individual and 1,100 institutional members.

An Investment In Generosity: Alvin Goldfarb



Alvin Goldfarb attended Washington University and left its business school in 1937 to work in his father's St. Louis-based garment-manufacturing business. In 1940, he founded Worth's stores, offering moderately-priced women's apparel as women increasingly entered the work force. He retired as president of Worth Stores Corp.

Mr. Goldfarb's late wife, Jeannette Rudman Goldfarb, graduated from Washington University's George Warren Brown School of Social Work in 1936 with a master of social work degree.

Before Mr. Goldfarb's \$5 million commitment to the Goldfarb School of Nursing at Barnes-Jewish College, he had established three other funds at Barnes-Jewish Hospital totaling more than \$1.1 million: The Alvin and Jeannette Goldfarb Nursing Scholarship Fund for Minority Students; the Alvin Goldfarb Endowment Fund; and the Alvin Goldfarb Patient Quality and Safety Fellowship.

Mr. and Mrs. Goldfarb have been tremendous supporters of Washington University as well. They were founding sponsors of the Scholars in Business Program at the John M. Olin School of Business; established the Alvin Goldfarb Professorship of Computational Biology; and have supported a wide range of building projects, including the Jeannette Goldfarb Plant Growth Facility, Goldfarb Auditorium, and Alvin Goldfarb Hall, a facility of the George Warren Brown School of Social Work.

The St. Louis Hillel Center was named the Alvin and Jeannette Goldfarb House in recognition of the Goldfarbs' support. Mr. Goldfarb has also received an honorary doctorate in humanities from Washington University, and was recognized in 1996 for his many contributions with the School of Social Work's Dean's Medal.

Mr. and Mrs. Goldfarb have supported many other organizations in the St. Louis area, with a special emphasis on access to quality education. They have three children and four grandchildren.

Mr. Goldfarb is currently a board member of the Jewish Federation of St. Louis, and a trustee of the Alvin Goldfarb Foundation.

A Message From Campaign Chair S. Lee Kling

Transforming Nursing Education

As we dedicate the Goldfarb School of Nursing at Barnes-Jewish College, I am pleased to recognize the many gifts that made this day possible. Our city and state will benefit from those who understand the need for excellence in nursing. Our goal is to become one of the top nursing schools in the country, and with the vision and commitment represented here, I am confident this goal will be realized.



Alvin Goldfarb's generous gift caps a \$20 million campaign launched by the Barnes-Jewish Hospital Foundation to transform the college. His investment is a pivotal moment in our efforts to create a world-class center of nursing education. We are honored that Alvin Goldfarb's legacy will endure as our graduates give the best care possible to patients and their families.

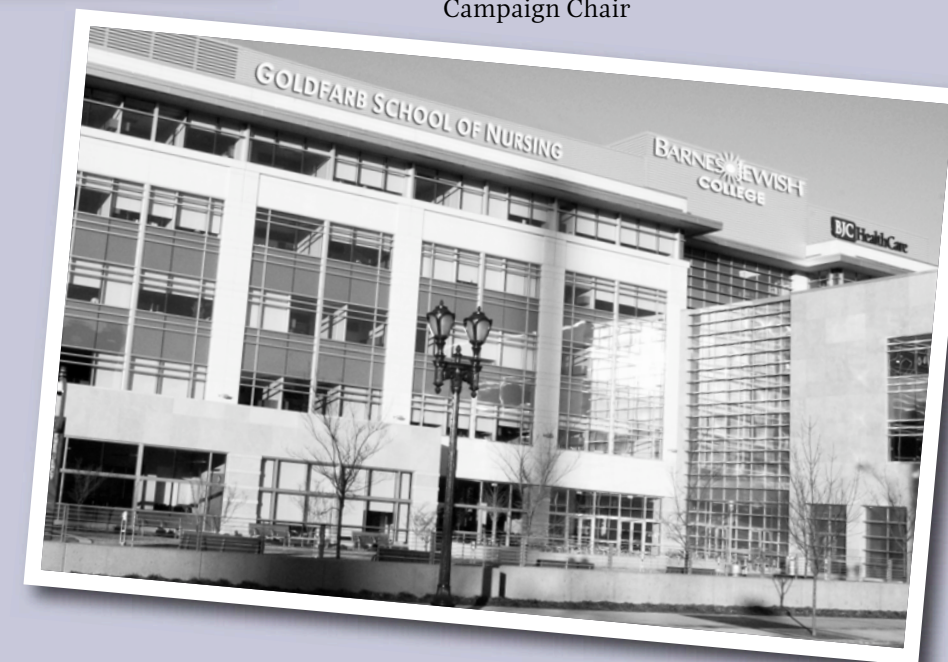
Half of the campaign funds raised augmented a leadership contribution from BJC HealthCare to construct the college building, and the other half will endow or directly fund scholarships, professorships, research, and program development.

I thank you for being so supportive of this wonderful project. This College is a gem that will benefit our entire community and state. With facilities like these, and with our most talented teaching staff, we will be one of our country's top nursing schools.

You made this happen.

On behalf of the Barnes-Jewish Hospital Foundation, sincere thanks to those who gave to the future of nursing education.

S. Lee Kling,
Campaign Chair



Transforming Nursing Education 2005-2007

Goldfarb School of Nursing at Barnes-Jewish College

We recognize the following donors for their gifts to the Barnes-Jewish Hospital Foundation in support of the campaign *Transforming Nursing Education*

Alvin Goldfarb

BJC HealthCare

DISTINGUISHED BENEFACTOR

Barnes-Jewish Hospital Auxiliary,
Parkview Chapter

Barnes-Jewish Hospital Auxiliary,
Plaza Chapter

Maxine Clark and Bob Fox

The Edison Family

The Taylor Family

MAJOR BENEFACTOR

Ameren

Ballmann Family Private Foundation

Barnes-Jewish College Alumni Association

Barnes-Jewish Hospital Medical
Staff Association

Milford* and Lee Bohm

Dr. William H. Danforth

Miss Emily Evans* and
Miss Cordelia Evans*

Dr. Ronald and Hanna Evens

Leon and Harriet Felman

Dorismae and Harvey A. Friedman

Ms. Helene Gonska*

Whitney and Anna Harris

The Hearst Foundation, Inc.

Hill-Rom

The Holekamp Family Foundation

Mrs. C. Ray Holman

The JSM Charitable Trust and

Anne and John McDonnell

S. Lee Kling Family

The Edward J. and Nancy Koplak Family

Laclede Gas Charitable Trust

Mr. and Mrs. John T. Loire

Mr. Ervin E. Lowes*

Robert and Colleen Millstone

Mr. and Mrs. Donald L. Ross

Mr. and Mrs. Marc A. Seldin

Siteman Family Foundation

Kenneth and Shawn Suelthaus

Helen Wells, RN, MNA

S.M. Wilson & Co.

Mrs. Thelma Zalk

Anonymous

BENEFACTOR

Dr. Charles B. Anderson

Richard* and Helen Putzel Bibbero*

Charles and Bunny Burson

Christner, Inc.

Mrs. Olive Gray Coe

Mrs. Shirley W. Cohen

Andrew B. Craig III

Cory and Bruno David

John and Yvette Dubinsky

Mr. and Mrs. Wm. Michael Ernst

Michael L. Evans, PhD, RN

Mr. and Mrs. David C. Farrell

First National Bank of St. Louis

Mr. and Mrs. Terry L. Franc III

Evelyn Beck Goldberg

Keith and Cindi Guller

Joan M. Hall

Earle H. and Suzanne S. Harbison, Jr.

Harvey and Judy Harris

Ms.Carolynn Ingerson Hoffman

and Mr. Harlan Hoffman

Mr. and Mrs. Mark Hood

Mr. and Mrs. Douglas O. Kirberg

Mr. and Mrs. Kenneth S. Kranzberg

The Kwame Foundation

Mr. and Mrs. Lee M. Liberman

Susan and Steven Lipstein

Mr. and Mrs. Thomas R. Martin

Mr. William E. Martin

Dr. Jeoraldean S. McClain*

Ms. Sharon O'Keefe and Mr. Harold Moore

Mr. Roy Pfautch

Herman T. and Phenie R. Pott Foundation

Louis R.* and Babette T. Putzel*

Donald and Peggy Ross

Mr. and Mrs. Robert E. Saur

Mr. and Mrs. Steven F. Schankman

Scherck Charitable Foundation

Craig and Tracy Schnuck

Mrs. Donald O. Schnuck

Dr. and Mrs. Larry J. Shapiro

Marcia and Robert E. Shapiro

Mr. Peter A. Smith

Michael and Carol Staenberg in
conjunction with The Staenberg

Family Foundation

Mrs. Norma E. Stern

Walter and Nora Stern

Mrs. Fern A. Tucker*

Harvey Wallace and Madeleine Elkins

Edith L. Wolff

World Wide Technology, Inc.

David A. Yawitz and Linda S. Yawitz

Andrew A. Ziskind, MD

Karen and Mark Zorensky

Anonymous

*deceased

PATRON

Mr. Howard C. Adele

Bettina C. Ahearn

Ms. Valerie J. Allen

James and Lisa Avery

Kathryn and Terry Bader

Ms. Clara E. Baker

Mr. and Mrs. Clarence C. Barksdale

Mr. and Mrs. Mark W. Bates

Ms. Brenda A. Battle

Mrs. Patricia L. Battram

Mr. and Mrs. Morton R. Bearman

Mr. and Mrs. Ted W. Beaty

Mr. and Mrs. Tom Beiseker

Mrs. Irene Chervitz Belsky

Sandra and Sanford Brickman

Saul* and Charlotte Brodsky

Ms. Kelly L. Brown, Victoria and Nicholas

Donna and Michael Bruner

Mrs. Daonne Chenault

Dr. and Mrs. Richard A. Chole

Mr. and Mrs. Lawrence A. Collett

Dr. and Mrs. Joel D. Cooper

Mr. and Mrs. Thomas R. Corbett

Mr. and Mrs. Richard T. Dalton

Mr. Pradip K. Das

Mr. and Mrs. Warren W. Davis

Mr. William L. Davis

Tom and Kathy Day

Dr. Catherine L. Dean and

Mr. William Burris

Joel and Betsy Dennis

Mr. and Mrs. Daniel Dent

Dr. and Mrs. Colin P. Derdeyn

Mr. and Mrs. Arnold W. Donald

Sandra Nesslein Dufay

Mr. and Mrs. Melville J. Dunkelman

Jane Eiseman

Mr. and Mrs. William B. Eiseman, Jr.

Essman Family Charitable Foundation

Mr. and Mrs. Kent Fair

Felecia Spurrier Fleishman

Mr. and Mrs. Gregory A. Fox

Mr. and Mrs. Norman Friedman

*deceased

Dr. Koichi Fujii

Ms. Donna C. Gail

Dorette and Ed Goldberg

Lori and Steve Goldberg

Paul and Susan K. Goldberg

Ruth Morian Grady

Mr. and Mrs. Peter B. Griffin

In Memory of Ida Grosenheider

Mr. and Mrs. Sidney Grossman

Guarantee Electrical Company

Mr. and Mrs. Jack D. Hamilton

Ms. Marlene A. Hartmann

Mrs. Zena Hellman

Mr. and Mrs. Alan C. Henderson

Dr. Bernadette M. Henrichs

Vera L. Herter

Mr. and Mrs. Richard Hirschfeld

Diana and George Holway



Helen Wells, RN, MNA

Mr. and Mrs. Merle Horowitz

Mr. and Mrs. Tim Hosler

Intelistaf Healthcare

Mr. Franklin A. Jacobs and

Ms. Marylen Mann

Mr. Erwin S. Jaffe

Mr. and Mrs. John R. Jordan, Jr.

Ms. Roberta S. Karmel

Mrs. Roger M. Katz

Mrs. Alene Kopolow

Dr. Maria Kovacs

Cathy and Bob Lachky

Leonard Landsbaum and Donna Moog

Mr. and Mrs. Lawrence E. Langsam

Mr. and Mrs. Donald E. Lasater

Dr. Cindy A. Lefton

Mr. and Mrs. Richard W. Levinson

Mr. and Mrs. William S. Levinson

Mr. and Mrs. Kenneth W. Levy

Mr. and Mrs. Steven A. Lieberman

Mr. and Mrs. Michael Lineback

Rosalyn and Charles Lowenhaupt

Mallinckrodt, Inc.

Ms. Claudine B. Malone

Peter and Robbie Martin

Mr. Paul J. McKee, Jr.

Dr. and Mrs. Robert C. McKinstry III

Rita C. Mersinger, Class of 1972 and 1996

Walter and Cynthia Metcalfe

Mrs. Emma J. Meyer

Lynda J. Monsey

Mrs. Hubert C. Moog

Eric and Sandra M. Moore

Pamela Y. Moore

Ms. Denise Murphy

Joan and Les Nackman

Dr. and Mrs. Benedict Painter

Ms. Jean Patterson-Neal

Gordon and Suzanne Siteman Phillips

Mrs. Kathy Novitskie Pool

Ms. Patricia A. Potter

Judy and Paul Putzel

Mr. and Mrs. David P. Rakey

Mr. and Mrs. E. Stephens Rand

Dr. Gail B. Rea and Mr. Paul F. Rea

Allen and Shirley Rector

Rehab Care Group, Inc.

Yvonne Rieger, RN, BSN, CNOR

Sara B. Slaton Roberts

Mr. Steven C. Roberts and

Dr. Eva L. Frazer and Family

Mr. and Mrs. Michael A. Rocca

Dr. and Mrs. Jack B. Rosen

Bob and Sally Roth

Mahlon and Maurine Rubin

Julia Silber Ruvelson

St. Louis College of Pharmacy
 David and Brittney Sandler
 Mr. and Mrs. Alan R. Schaffer
 Mr. and Mrs. Robert J. Scherrer
 Cary and Lori Schreiner
 Scrubs & Beyond, LLC
 Mr. and Mrs. Leslie A. Small
 Mr. and Mrs. Kenneth B. Steinback
 Mr. and Mrs. Patrick T. Stokes
 Mr. and Mrs. Raymond Stotler
 Mr. and Mrs. Michael J. Sullivan
 Dr. and Mrs. William K. Tao
 Elaine Diekmann Tatkow
 Mr. and Mrs. Elbert L. Thomas, Jr.
 Mr. Richard J. Townzen
 Mr. and Mrs. H. Edwin Trusheim
 Evan and True Turk
 University Lane Foundation
 Coreen and Paul Vlodarchyk
 Jean Jolley von Hoffmann
 Dr. and Mrs. Stanley M. Wald
 Mr. and Mrs. John K. Wallace, Jr.
 Washington University in St. Louis
 Mrs. Janet M. Weakley*
 Ms. Joanne Williams
 Sylvia Ann Henley Wright
 Chancellor and Mrs. Mark S. Wrighton
 Anonymous

FRIEND

Ms. Erica L. Abbett
 Mrs. Phyllis Abele
 Mrs. Cathleen L. Abrams
 Mr. and Mrs. Michael S. Afentoullis
 Ms. Charmmorn Ali
 Ms. Kelley R. Allen
 Mrs. Marcella L. Allison
 Mrs. Judi M. Alpert
 Mrs. Rowena Altin
 Mrs. Gwendolyn E. Alvarez
 Ms. Tracy Alward
 Ms. Nancy Andershock
 Mrs. Susan A. Antes
 Ms. Deborah Anthony

Arcturis Architects
 Mr. and Mrs. Erwin O. Arends
 Ms. Mattie Arnold
 Mr. and Mrs. Joe A. Arro
 Ms. Jennifer Arvin
 Dr. and Mrs. Phillip V. Asaro
 Mrs. Genie S. Ashworth
 Ms. Joyce A. Atkins
 Ms. Dena Aud
 Mr. and Mrs. H.T. August
 Mr. and Mrs. Ira Babcock
 Mr. and Mrs. Craig A. Baggett
 Mrs. Irene J. Baker
 Mr. and Mrs. Thomas P. Bakersmith
 Ms. Cynthia Baldauf
 Bank of America, NA
 Mr. and Mrs. Melvin S. Barad
 Mr. Donal L. Barbee, Jr.
 Mr. Edward Barber
 Mrs. Mary G. Bard
 Mrs. Penelope A. Bari
 Mr. and Mrs. James Barnes
 Barnes-Jewish College of Nursing
 Barnes-Jewish West County
 Hospital Medical Staff Association
 Mr. and Mrs. Bob Barrar
 Mrs. Joan Barzilai
 Mr. and Mrs. Phillip A. Bauer
 Mrs. Carolyn Bauguess
 Mr. and Mrs. Adolph J. Baumgarten
 Mr. and Mrs. Matthew Becker
 Mrs. Paula Beemer
 Mrs. Florine S. Bender-Marks
 Benoff Insurance Agency, Inc.
 Mr. and Mrs. Bobby Berger
 Mr. Richard Berger
 Mr. and Mrs. Thomas Berger
 Mr. Ryan Bernacki
 Mrs. Joyce E. Berndt
 Mrs. Evelyn S. Bernstein
 Ms. Eunice J. Berry
 Mrs. Karen Bess, RN, MSN
 Mrs. Ruth Bialson
 Mrs. Geraldine L. Black

Mr. and Mrs. Wayne E. Black
 Mr. and Mrs. Claude Blackmore
 Ms. Barbara Blaes
 Ms. Theresa M. Bloss
 Mr. and Mrs. Donald A. Blum
 Mrs. Cynthia L. Boatright
 Ms. Jean M. Bocklitz
 Mr. and Mrs. Mark A. Bogovich
 Dr. and Mrs. George M. Bohigian
 Mrs. Rita M. Bohrer
 Boone County Hospital Board of Trustees
 Mr. and Mrs. Robert Bosslet
 Ms. Shaunda Boyd
 Mrs. Karen J. Braatz
 Dr. Ellamae Branstetter
 Ms. Betty J. Brantley
 Ms. Jo Ann M. Bray
 Mr. and Mrs. Jerry L. Brayman
 Mr. and Mrs. Brian P. Brennan
 Ms. Jill A. Breuer-Westerman
 Mrs. Mildred Brickman



Ms. Noemi T. Brion
 Mr. Matthew D. Britt
 Mr. and Mrs. Norman Broad
 Mrs. Virginia Brodin
 Mr. and Mrs. Philip H. Brooks
 Brown Shoe Company, Inc.
 Mr. and Mrs. Kenneth W. Brown
 Mrs. Dolores Broyles
 Mrs. Doris Brune
 Ms. Deborah A. Brusatti
 Mrs. Marilyn A. Brusewitz
 Mrs. Judith Bucholtz

*deceased

Dr. Elizabeth A. Buck and Mr. Perry L. Buck
 Mr. and Mrs. Michael Buckley
 Mrs. Patricia M. Buehler
 Mr. Marlin Buelow
 Mr.* and Mrs. Lester Buescher
 Mr. C. Mark Bumgarner
 Ms. Leila E. Bunte
 Mr. Kenneth Burch
 Mr. and Mrs. Gillum E. Burgess
 Mrs. Betty G. Burk
 Mrs. Betty L. Burnam
 Ms. Kathleen Burst
 Mrs. Faye M. Busse
 Mr. and Mrs. Joseph E. Caezza
 Mrs. Martha A. Caldwell
 Mr. Farron J. Callais
 Mr. and Mrs. Robert W. Cannon
 Mr. and Mrs. David V. Capes
 Mr. and Mrs. John H. Carson
 Mrs. Stacy J. Carson
 Mr. and Mrs. Paul R. Cary
 Mr. and Mrs. Phil W. Caster
 Mr. and Mrs. Ashok Chawla
 Dr. and Mrs. Alan Cheney
 Mr. and Mrs. David Cherney
 Mr. and Mrs. Robert D. Chervek
 Ms. Andrea Chevalier
 Ms. Dorothy M. Choate
 Mr. Chia-Ling Chou
 Citigroup
 Mr. and Mrs. Dominic Ciuffreda
 Mr. and Mrs. Charlie Clardy
 Mrs. Marian E. Clark
 Ms. Paula K. Clouse
 Miss Ruby J. Cobb
 Mr. and Mrs. James H. Cohen
 Mr. and Mrs. Louis D. Cohen
 Mr. and Mrs. Jay E. Cohn
 Mr. and Mrs. Jules B. Cohn
 Mrs. Ann M. Collins
 Ms. Nancy E. Collins
 Ms. Vicky Collins-Brown
 Commerce Bank
 Mr. and Mrs. Charles Compton

*deceased

Mr. and Mrs. Charles J. Cook
 Mr. and Mrs. Robert A. Cook
 Mr. and Mrs. Jack M. Cooper
 Mr. Jackie Cooper
 Dr. Vicki Coopmans
 Mr. Timothy Corbett
 Mrs. Judith A. Costello
 Mr. and Mrs. Harvey Cotlar
 Mrs. Linda Cottler
 Ms. Jane Cowell-Oates
 Ms. Hazel Craig
 Mr. and Mrs. Howard B. Cramblitt
 Mrs. Carol A. Crane
 Mr. Forest L. Crawford
 Mrs. Suda Crawford
 Ms. Bonnie Crews
 Mr. and Mrs. Richard T. Crnkovich
 Mr. Robert L. Crow
 Ms. Jean L. Crowder
 Susan M. Culican
 Ms. Anne C. Curran
 Ms. Kristina Cyvas
 Mr. John Danklef
 Mrs. Carol S. Darling
 Mr. Gyasi Davis
 Mr. and Mrs. James F. Davis
 Mrs. Wilbur W. Davis
 Mrs. Linda Debolt
 Mrs. Sally J. Delabar
 Mrs. Josephine M. Delia
 Ms. Noreen Demonte
 Ms. Elaine Dempsey
 Mr. and Mrs. Donald W. DeNeal
 Ms. Susie Dengler
 Mr. Leroy Dentman
 Ms. Deborah S. Depond
 Ms. Kathleen A. DeVries
 Mr. and Mrs. D. Norman DeWoskin
 Mrs. Mary E. Dieckmann
 Ms. Holly J. Diesel
 Mr.* and Mrs. John W. Dillon
 Mr. and Mrs. Richard Dirnberger
 Ms. Arlene Dittmar
 Mrs. Tracy K. Dobbie

Ms. Annette Dobbs
 Mr. and Mrs. Leeman R. Dodd
 Mr. and Mrs. John F. Dodge



Mr. John Doheny
 Mr. and Mrs. Leo W. Donahue
 Ms. Stephanie C. Dorris
 Ms. Georgia Doumouras and
 Ms. Virginia Doumouras
 Mrs. Marjorie H. Dozier
 Ms. Leah M. Dragovich
 Mr. and Mrs. Richard H. Drury
 Mrs. Rita Dunton
 Mr. and Mrs. William R. Dye
 Mrs. Jacqueline E. Dyll
 Mrs. Melissa Eakins
 Mr. Gary L. Easley
 Mr. and Mrs. Robert K. Eckart
 Ms. Dorothy J. Eckert
 Ms. Karen Eddinger
 Mr. and Mrs. Thomas F. Edler
 Mr. and Mrs. Benjamin F. Edwards III
 Mrs. Cynthia Boyer Edwards
 Ms. Louise Effan
 Mrs. Loretta Eggmeyer
 Mr. Frank J. Ehlen
 Mrs. Karen T. Ehrhard
 Mrs. Clare B. Eisenbach
 Mr. Stephen F. Elken
 Mrs. Marjorie H. Ellins
 Ms. Laura Epstein
 Mrs. Beverly E. Ervin
 Ms. Hilda Eubanks
 Mr. Dean Evans

Thank You

Mrs. Sherri R. Failoni
 Mrs. Mary C. Fallon
 Ms. Patricia A. Fanning
 Mr. John R. Farthing
 Rabbi Mark J. Fasman
 Mr. John E. Faszholz
 Mrs. Marlin M. Felts
 Mr. and Mrs. Vincent Fernandez
 Mrs. Phyllis Fick
 Ms. Ashley Fields
 Ms. Carolyn Fields
 Ms. Melissa Findley
 Mr. and Mrs. Alan J. Fine
 Mrs. Lillian E. Finn
 First National Bank of Troy, Illinois
 Dr. Lewis C. Fischbein and
 Mrs. Kathleen R. Gibbs
 Ms. Cathy Flasar
 Ms. Gail Flemming
 Mrs. Janice Floyd
 Mr. and Mrs. Preston G. Foehrkalb
 Mr. and Mrs. Jerry Fogel
 Ms. Wynetta Follins
 Mr. and Mrs. Burton E. Follman
 Ms. Anna C. Forder
 Mrs. Joann Foriester
 Mr. and Mrs. George Foster
 Mr. Gene P. Fountaine
 Mrs. Ruby I. Fox
 Ms. Leola E. Frandsen
 Mrs. Carol Frank and
 Mrs. Barbara McDonald
 Mr. and Mrs. Robert J. Fraser
 Mr. and Mrs. Semon Frelich
 Mr. and Mrs. Harvey Friedman
 Dr. and Mrs. Robert H. Friedman
 Dr. and Mrs. William M. Friedman
 Mr. and Mrs. Curt Friehs
 Mr. and Mrs. Parker W. Fritschle
 Ms. Tanya Fritz
 Mr. and Mrs. Loraine Fruth
 Mr. and Mrs. John D. Fudenberg
 Dr. and Mrs. Roger Fuller
 Mrs. Dorothy A. Fulmer

Mr. and Mrs. Robert L. Funk
 Mrs. Beverly A. Furman
 Mr. and Mrs. Steven B. Gabriel
 Mr. and Mrs. Robbie V. Gaines
 Mr. and Mrs. Carl Gallop
 Mrs. Melba Gamble
 Ms. Stacy M. Garger
 Mrs. Margaret A. Garner
 Mr. and Mrs. Glendol D. Garrett
 Mr. and Mrs. Harold W. Gehrig
 Mr. and Mrs. Marvin Gelber
 Dr. and Mrs. Philip G. George
 Mr. and Mrs. James Georgen
 Ms. Margene B. Gerfen
 Dr. and Mrs. Marvin Gernstein
 Ms. Nina Gerst
 Mrs. Violette E. Getsfred
 Mrs. Victoria A. Getz
 Cmdr. Sgt. Russell L. Geyer and
 Mjr. Mary K. Geyer
 Miss Loida Gilbert
 Dr. and Mrs. Jerome Gilten
 Steve Gillen Builder, Inc.
 Ms. Charlotte Givens
 Dr. Robert J. Glaser
 Mrs. Judy Glass
 Mr. Ralph E. Goestenkors
 Mrs. Shirley Goin
 Mr. and Mrs. Alan Goldberg
 Mrs. Lillian Goldman



Mr. and Mrs. Steven Goldsmith
 Mr. and Mrs. George P. Goldstein
 Mr. and Mrs. Charles A. Golitko
 Mrs. Linda L. Goodman
 Mr. and Mrs. Neil W. Goodwin
 Mr. Jerrold J. Graber
 Mrs. Treina A. Graham
 Ms. Michele Grant
 Ms. Kathy Gray
 Mrs. Carolyn S. Greeling
 Mrs. Lisa A. Green
 Mrs. Ethel Greenberg
 Mrs. Anne M. Greene
 Mrs. Elizabeth A. Greengold
 Mr. Denis A. Greenland
 Mr. Peter C. Greggensen
 Mr. and Mrs. Richard A. Griffey
 Mrs. Deborah C. Grigg
 Col. and Mrs. Leonard L. Griggs
 Mrs. Honey Grosberg
 Mr. and Mrs. Ralph Grosberg
 Mr. and Mrs. Michael J. Grzyb
 Mrs. Millicent Guerri
 Mr. Mahendra R. Gupta and
 Ms. Sunita M. Garg
 Ms. Joan L. Gusewelle
 Mr. Terry G. Gustin
 Mrs. Darlene A. Hagen
 Dr. Bruce L. Hall and
 Dr. Mary Klingensmith
 Ms. Carolyn S. Hammond
 Mr. and Mrs. Eugene E. Hance
 Mr. and Mrs. Ronald L. Haring
 Mr. and Mrs. Edward A. Haroian
 Mr. and Mrs. Roy C. Harr
 Mr. and Mrs. Melvyn Harrington
 Mrs. June H. Harris
 Mrs. Kathleen Harris
 Ms. George A. Hartzog
 Mr. Daniel Haselhorst
 Mr. Anthony Hastings
 Mr. and Mrs. Michael S. Hatley
 Mrs. Kathleen K. Haven
 Mrs. Bertha J. Hawk

*deceased

Mr. and Mrs. Darrell Hay
 Mrs. Nelba Hayes
 Mrs. Judith A. Headley
 Ms. Rhoda L. Headley
 Mrs. Patricia H. Hearne
 Mr. Delmer L. Hedge
 Mr. John M. Heeter and
 Ms. Holly J. Diesel
 Mr. and Mrs. Mark Heffernan
 Ms. Pat Heflin



Mr. and Mrs. Charles F. Heidenfelder
 Mr. and Mrs. Thomas C. Heineman
 Mrs. Carole S. Heisserer
 Ms. Dawn A. Held
 Ms. Aldred L. Hellmich
 Ms. Jane A. Helms
 Mrs. June Heming
 Mr. Warner Henderson
 Mr. and Mrs. Jay G. Henges
 Mr. Alfred Henneboehle and
 Ms. Sarah E. Terrace
 Mr. and Mrs. Richard Hennenhoefer
 Mrs. Dorothy M. Herbertson
 Ms. Dayna Herndon
 Mr. Anttione Herring
 Mrs. Karen L. Hertz
 Ms. Charlene Hester
 Mrs. Julie A. Heuer
 Mrs. Michelle F. Hieger

*deceased

Ms. Donna L. Higginbotham
 Mr. and Mrs. Richard E. Hitt
 Mrs. Joan Hochman
 Dr. Dee Hodge III
 Mrs. Malinda J. Hoehn
 Mr. and Mrs. Thomas Hoff
 Mr. and Mrs. Theodore H. Hoffman
 Mrs. Susan K. Hogenmiller
 Mrs. Beatrice M. Holcomb
 Dr. Raymond F. Holden

Mr. Harry B. Holtgrewe*
 Dr. Barbel Holtmann
 Ms. Kendra J. Hood
 Dr. Kathleen E. Hoover
 Mrs. Esther B. Hopgood
 Mr. Paul D. Horst
 Mrs. Emily G. Huber*
 Mrs. Meimei L. Huber
 Mr. and Mrs. James Hudson
 Mr. and Mrs. Louis J. Huelsing
 Mr. and Mrs. Richard A. Hughes
 Mr. and Mrs. Marcella S. Hulshof
 Mrs. Janet R. Hummel
 Mrs. Ann R. Husch
 Mr. and Mrs. Robert W. Hutkins
 Mr. and Mrs. Warner A. Isaacs
 Mr. and Mrs. Julian Jablonow
 Mr. and Mrs. Jalal D. Jabro
 Mrs. Judith A. Jackson

Mr. Marius A. Janson
 Ms. Mary C. Jensen
 Ms. Mary Ann Jobe
 Ms. Patricia C. Jobe
 Mrs. Dorothy Johnson
 Ms. Rebekah Johnson
 Ms. Roberta Johnson
 Mr. Zalika Johnson
 Mrs. Carol A. Johnston
 Mrs. Eva N. Jones
 Ms. Grace L. Jones
 Ms. Karen R. Jones
 Mr. Kenneth E. Jones
 Ms. Susan D. Jones
 Mrs. Sandra M. Julien
 Mr. and Mrs. Martin Kalmes
 Ms. Vickie D. Kamadulski
 Ms. Sandy Kaplan
 Mr. and Mrs. Timothy O. Kappert
 Mr. Allen J. Karlin
 Ms. Sara J. Kasten
 Ms. Audrey L. Katcher
 Mr. and Mrs. Larry R. Katzen
 Mr. and Mrs. Gerald J. Keaveny
 Ms. Joyce P. Keith
 Mr. and Mrs. Roger A. Keller
 Kathleen Kellerstrass
 Mrs. Mary A. Kellogg and
 Mr. Robert Powers
 Mrs. Georgia A. Kemp
 Mrs. Mary Kennedy
 Mr. and Mrs. Herbert Kennett
 Ms. Paige Khoury
 Mr. Stephen A. Kielbasa
 Mr. and Mrs. Thomas A. Kihlken
 Mrs. Gertrude M. Killen
 Ms. Kay E. Kindig
 Mr. Mike King
 Mr. and Mrs. Ronald R. Klawitter
 Ms. Mary M. Kleba
 Mrs. Susan D. Kleekamp
 Mrs. Ann N. Klein
 Mr. and Mrs. Ronald M. Klein

Thank You 16

Mr. and Mrs. Walter F. Klein, Jr.
Dr. Marvin D. Kleinau and
Dr. Marion Kleinau
Mrs. Dolores Kling
Mrs. Marian G. Kling
Mr. and Mrs. Steven G. Klinger
Mrs. Muriel B. Knuckle
Mr. James M. Koch and Dr. Connie Koch
Dr. and Mrs. George Koehler
Norman and Joan Koehler
Mrs. Nancy Koenig
Mr. and Mrs. Edwin Koopmann
Mr. and Mrs. Raymond A. Kopec
Ms. Judy L. Korman
Mrs. Bonnie K. Kowalski
KPMG LLP
Krey Distributing Company
Mrs. Harriet K. Kronick
Mr. and Mrs. Charles F. Kubik
Dr. and Mrs. Emil F. Kuhn
Marilee Kuhrik, PhD and
Nancy Kuhrik, PhD
Mr. and Mrs. Stephen LaBerta
Mr. and Mrs. David H. Lake
Mr. and Mrs. Thomas S. Lambert
Mrs. Marilyn K. Lamoureux
Ms. Bettina C. Lampkin
Mr. and Mrs. James P. Landolt
Mr. and Mrs. Charles A. Lane
Mr. James E. Lang
Mr. and Mrs. Jeffrey B. Lapidus
Mr. and Mrs. John J. Laschober
Ms. Laura Latragna
Mrs. Barbara N. Lavier
Dr. Edward F. Lawlor
Mrs. Kelle K. Laws
Amy B. Lee, RN
Ms. Ida Lee
Ms. Margaret Lee
Mr. and Mrs. David S. Lega
Ms. Carmen Lehman
Mr. and Mrs. Don G. Lents
Mrs. Elaine Levinsohn
Mr. Ronald A. Levinson

Mr. Donald Levy
Ms. Ruth D. Lewin
Mrs. Gail Lewis
Mr. and Mrs. Patrick A. Lewis
Mrs. Yin Li
Ms. Shirley M. Ligibel
Mr. Noppachar Limpaphayom
Mrs. Aileen R. Lind
Dr. and Mrs. Robert I. Lindemeyer
Dr. and Mrs. David A. Lipsitz
Mrs. Paula M. Littleton
Mr. and Mrs. Herman L. Litwack
Mrs. Carol B. Loeb
Mr. and Mrs. Edward S. Loeb
Mr. and Mrs. Jeffrey Loeb
Mrs. Karen H. Logsdon
Mr. and Mrs. Ashley M. Loiterstein
Ms. Edith M. Long
Mrs. Patricia A. Lonhart
Mrs. Carol Looker
Mr. and Mrs. Kevin J. Loos
Mr. and Mrs. Allen F. Love
Mr. Albert C. Lowes
Mrs. Barbara Lowmaster
Mr. Elmer W. Lueckerath
Mr. and Mrs. Chris V. Luers
Mrs. Erma J. Luster
Mr. and Mrs. Richard L. Lynch
Dr. and Mrs. Carl A. Lyss
Mrs. Bonnie R. Madden
Mrs. Paula J. Madison
Mr. and Mrs. Barry Mandel
Mr. Charles E. Marantz*
Mrs. Jacqueline Maritz
Dr. and Mrs. Eric S. Marks
Mrs. Florine B. Marks
Ms. Dena Marmigas
Mr. and Mrs. Joseph Marquart
Ms. Maxine Marshall
Ms. Pheba T. Marshall
Mr. and Mrs. Douglas Marti
Mrs. Veola P. Martin
Mrs. Patti A. M. Masotti
Ms. Rita Matherly

Mr. and Mrs. Stephen A. Matt
Ms. Mary J. Matthews
Mr. Joe D. Mayfield
Mr. and Mrs. John F. McAteer
Mr. Phillip Reed McBride
Ms. Florence McCarthy
Mrs. Elaine McClure
Ms. Joanie McConnell
Ms. Peggy Redus McCree
Mr. Kevin J. McDevitt
Mrs. Karen L. McDonagh
Ms. Sharon A. McGahan
Lisa and Thomas McGinty
Mr. and Mrs. George W. McGuire
Mr. and Mrs. Gregory G. McKee
Mrs. Judith McKelvey
McMillan Construction Group, Inc.
Mrs. Suzanne McNeal
Mr. Michael P. McVay
Mr. and Mrs. Merle Mehtens
Mr. and Mrs. Edwin B. Meissner, Jr.
Mrs. Beverly Meister
Dr. Robert S. Mendelsohn and
Mrs. Susan K. Mendelsohn
Ms. Veronica Merrell
Ms. Gloria P. Metzger
Mrs. Kathleen M. Meyer
Mrs. Vivian R. Meyer
Ms. Martha B. Meyerhardt
Mr. and Mrs. Richard L. Meyerhardt
Carol Miller
Mrs. Delores Miller
Mrs. Jeanne M. Miller
Mr. and Mrs.* I.E. Millstone
Mrs. Clara F. Milster
Missouri Higher Education Loan Authority
Mrs. Gina M. Mitchell
Mrs. Mona R. Mitchell
Mr. and Mrs. Stephen D. Mitchell
Mrs. Jamie M. Monafu
Mrs. Anne M. Mongiovi
Mr. Mark J. Moore
Ms. Ruth D. Morgan
Ms. Clementine Moriarty

Mrs. Gail P. Morrison
Mrs. Shirley A. Mosesson
Mrs. Willa M. Mueller
Mrs. Patricia J. Mueth-Smith
Mr. and Mrs. Michael Mullen
Ms. Michele B. Muraski
Mr. and Mrs. Edwynne C. Murphy
Mrs. Deborah A. Murray
Mrs. Marian Murray
Mr. Hal H. Myers
National Education Servicing, LLC
Dr. and Mrs. Royden W. Neal
Mr. and Mrs. Ralph E. Neall
Mr. and Mrs. James A. Neilson
Mrs. Darla R. Nekorчук
Mrs. Diane Nelsen
Mr. and Mrs. Michael N. Newmark
Ms. Beverly J. Novak
Mr. and Mrs. Joe Novak
Mr. Joseph F. Nowak
Mr. and Mrs. Frank P. Nykiel
Mrs. Kathleen Oberhaus
Ms. Bobbye Oberman
Mr. Daniel L. O'Brien
Mr. and Mrs. William T. O'Byrne
Mr. and Mrs. James B. Odle
Mr. and Mrs. John J. O'Grady
Mr. James P. O'Haire
Ms. Carin Ohnell
Mr. and Mrs. Joseph Olivastro
Mr. and Mrs. Eric Ongaro
Ms. Rillah J. Owen
Mr. and Mrs. Nick J. Palazzolo
Ms. Brenda Palmer
Mrs. Sandra J. Pang
Mr. and Mrs. Wally J. Pankowski
Mr. and Mrs. Leon Parman
Mr. and Mrs. James Y. Paskal
Mr. and Mrs. Michael Pass
Mr. and Mrs. Ronald Pass
Ms. Judy Paull
Mrs. Cheryl L. Pelate
Ms. Ann Petlin
Ms. Bertha L. Pettus

Ms. Doris M. Pfeffer
Mr. and Mrs. William Phegley
Mr. and Mrs. Dwight Phillips
Dr. and Mrs. Gordon W. Philpott
Mrs. Sharon A. Pike
Mr. David R. Plank
Dr. and Mrs. Steven I. Plax
Mr. Steven Player
Mr. and Mrs. Larry W. Pleau



Mrs. Neola Poertner
Mrs. Mary M. Poff
Mr. Mark J. Polczynski
Mrs. Judy L. Poletti
Ms. Irene E. Pollert
Mr. and Mrs. Michael Poole
Mrs. Heather L. Popham
Mrs. Elizabeth A. Pos
Mr. Claude A. Powell
Mr. and Mrs. David Powell
Mrs. Patricia A. Presley-Spade
Mr. and Mrs. James E. Preston
PricewaterhouseCoopers LLP
Mrs. Barbara Priest
Ms. Taryn Prince
Mr. and Mrs. Paul D. Prouty
Mr. and Mrs. Matthew Pruitt
Mr. and Mrs. Robert Purcell
Mr. and Mrs. Richard L. Rakers
Mr. Ray Raley
Mrs. Ora A. Rampenthal

Marilyn and Bob Raphael
Dr. Amy J. Ravin
Mr. and Mrs. Jacob W. Reby
Mr. and Mrs. Rick Reckamp
Mr. and Mrs. William Reddick
Mrs. Geraldine M. Reed
Mrs. Joyce O. Reeves
Mrs. Deborah A. Rehm
Mr. Charles R. Reichardt
Mrs. Patricia M. Reichwein
Mr. and Mrs. Ralph F. Reis
Ms. Patricia Rekart
Mr. and Mrs. David Rennard
Dr. and Mrs. Marvin Rennard
Mr. and Mrs. Sidney A. Rennard
Mrs. Joy Renner
Mr. Todd A. Renner
Mrs. Mary A. Reyburn
Mr. Svetlana Reznikov
Ms. Emelina Richter
Ms. Vincelle R. Ridolfi
Mrs. Carol W. Ritter
Mrs. Gretchen A. Ritter
Mr. and Mrs. Robert H. Ritter
Mr. and Mrs. Lloyd Roatch
Mrs. Elizabeth J. Roberts
Mr. Gregory A. Roberts
Mr. and Mrs. Richard D. Roberts
Mrs. Sheila M. Robertson
Mr. Calvin Robinson
Mrs. Catherine Robinson
Mr. and Mrs. Paull Robinson, Friends
and Neighbors of Barbara Boruff
Mr. and Mrs. Elliott D. Rogers
Ms. Mary J. Rogers
Mrs. Diane Rohde
Ms. Marilyn A. Rohlfling
Ms. Mary Romanus
Mr. Lawrence K. Roos*
Mr. and Mrs. Albert S. Rose, Jr.
Mrs. Clara Rose
Dr. and Mrs. Herbert E. Rosenbaum
Mr. and Mrs. Richard B. Rosenthal
Mr. Wayne Rosenthal

*deceased

*deceased

Thank You

Mrs. Bette Rothman
 Mr. and Mrs. Norman M. Rubenstein
 Mrs. Charlotte L. Rubin
 Ms. Linda Rubin
 Mr. and Mrs. Wayne Ruehrup
 Mrs. Vera M. Rust
 Mrs. Elizabeth R. Ruwitch
 Dr. Joseph F. Ruwitch, Jr.
 Mr. and Mrs. Michael C. Ruwitch
 Ms. Ann Ryan
 Mr. and Mrs. Gary L. Rydell
 Mr. and Mrs. Maury J. Rydell
 Mrs. Nancy D. Safarik
 Mrs. Shirley Sahlie
 Dr. Llewellyn Sale
 Ms. Jacqueline R. Saleeby
 Mr. and Mrs. Bernard Salky
 Mr. and Mrs. Edward R. Samuels
 Mrs. Mary Lou Sanderson
 Mrs. Mary M. Sandfort
 Mr. and Mrs. Louis H. Sandoval
 Mrs. Dorothy Saxe*
 Mrs. Nancy L. Scheer
 David and Noël Schiber
 Mrs. Patricia A. Schlosser
 Mrs. Patricia M. Schmeder
 Mr. and Mrs. Chester G. Schmidt
 Mr. and Mrs. Leon J. Schmidt
 Mr. Lucy C. Schmidt
 Ms. Nancy L. Schmitz
 Mr. and Mrs. Kenneth R. Schneider
 Mrs. Edna L. Schoknecht
 Mr. and Mrs. Blake H. Schubert
 Ms. Deborah Schuchart
 Ms. Linda Schultz
 Mr. and Mrs. Sidney Schuman
 Mr. and Mrs. Arnold H. Schwab
 Mr. and Mrs. Lee K. Schwartz
 Mr. and Mrs. Richard A. Schwegel
 Mr. and Mrs. Bert Schweizer II
 Mrs. Elouise I. Searcy
 Mr. and Mrs. Fred Seigel
 Mrs. Elizabeth A. Seliga
 Mr. and Mrs.* Jonathan M. Serkes

Mr.* and Mrs. Clifford Shanfeld
 Mrs. Aileen B. Shapiro
 Mrs. Mildred E. Sharp
 Ms. Peggy D. Sharp
 Ms. LaDonna Shegog
 Mrs. Kelly Shemwell
 Ms. Margaret B. Shepley
 Mr. and Mrs. David S. Sherman, Jr.
 Mr. and Mrs. John C. Shields
 Mr. and Mrs. Edwin G. Shifrin
 Mr. and Mrs. Daniel P. Shine
 Shoe Ladue



Mr. and Mrs. Robert D. Shreve
 Sigma Theta Tau International, Inc.
 Mr. and Mrs. Robert L. Silva
 Ms. Harriet Simon
 Ms. Pamela J. Simpson
 Mrs. Michelle B. Singer
 Mr. Jasvinder Singhmd and
 Ms. Meleani Matson
 Dr. and Mrs. Richard G. Sisson
 Mrs. Lita Daniels Skalka
 Mrs. Lela Skelton
 SmartFUNDS
 Mrs. Suanne Smith
 Mrs. Linda M. Snyder
 Mrs. Ann Y. Solomon
 Mr. and Mrs. Boonchanh Soukpraseuth
 Mrs. Kitty Sperry
 Mrs. Lisa K. Spinner
 Mr. Jeffrey A. Sprock

Mark H. Spurrier, MD
 Mr. Phil Stalling
 Ms. Linda A. Stamm
 Mrs. Barbara Stapczynski
 Ms. Elizabeth T. Steib
 Mr. and Mrs. Charles J. Steiner
 Mrs. Katherine A. Stephens
 Mr. and Mrs. Henry H. Stern, Jr.
 Mrs. Sylvia Stern
 Mr. and Mrs. William M. Stern
 Miss Marcia H. Sterneck
 Mrs. Joan Steska
 Ms. Catherine L. Stewart
 Mr. and Mrs. Dean R. Stewart
 Mrs. Danielle Stitt
 Ms. Laura Stock
 The Stolar Partnership LLP
 Mr. and Mrs. Cary Stolar
 Stolze Printing Company, Inc.
 Mr. and Mrs. Carl Stone
 Mr. and Mrs. William B. Stone
 Gregory A. Storch, MD
 Mr. and Mrs. Floyd M. Storm
 Mrs. Hanna I. Strauss
 Mr. and Mrs. Roland Strauss
 Mrs. Myrna J. Streicher
 Mr. and Mrs. Michael R. Strelie
 Dan and Anita Sullivan
 Mr. and Mrs. Donald Summers
 Ms. Jane Sutter
 Ms. Barbara E. Sutton
 Swiftlink, LTD
 Mrs. Dorothy Syberg
 Mrs. Lucy Sybert
 Mrs. Donna Sympson
 Ms. Peggy Szwabo
 Mr. and Mrs. Andrew C. Taylor
 Mrs. Mary L. Taylor
 Ms. Sadie Taylor
 Ms. Lynne Telfair
 Paul M. Tesser, MD
 Dr. and Mrs. Bradley T. Thach
 Mr. and Mrs. Paul B. Thacker
 Mrs. Vicki L. Thalmann

*deceased

Dr. Samer Thanavaro and
 Dr. Joanne L. Thanavaro
 Mr. Harry Thomas
 Mr. Larry Thomas
 Thompson Coburn LLP
 Mr. and Mrs. Robert M. Tobben
 Dr. and Mrs. Garry S. Tobin
 Ms. Christine Tobnick
 Mr. and Mrs. Craig Toder
 Mr. Mohammad Tola
 Mrs. Clara Lee Triplett
 Ms. Patricia Tripp
 Mrs. Doris E. Tuominen
 Mr. and Mrs. Richard A. Turner
 U.S. Bank
 Mr. and Mrs. Larry Ulrich
 Ms. Linda D. Urden
 Mr. Vance Urick
 Mr. Andrew F. Usselman
 Mrs. Luann Valentine
 Mr. and Mrs. William R. Van Luven
 Ms. Kathleen Vasquez
 Ms. Mildred Veile
 Mrs. Juanita J. Veith
 Mr. and Mrs. Thomas Vickrey
 Mr. and Mrs. Richard F. Vogel
 Mr. and Mrs. Richard D. Voisey
 Mr. Jerry Vuchak and
 Mr. Douglas E. Lanners
 Mr. Fred Wachter
 Mr. and Mrs. Steven K. Wagner
 Dr. and Mrs. Jeffrey A. Wald
 Ms. Marcia Walker
 Mr. and Mrs. Olas T. Walls
 Mr. Edward Walsh
 Mr. Charles L. Ward
 Mr. Hardy Ware
 Ms. Trena Warren
 Washington University Department
 of Internal Medicine
 Washington University Internal Medicine
 Business Office
 Ms. Tsugie Watanabe
 Mr. and Mrs. James S. Watson

*deceased

Mrs. Karen L. Watson
 Mr. and Mrs. Donald G. Wegner
 Mrs. Donna L. Weiner
 Mr. and Mrs. Eugene Weinstein
 Mr. and Mrs. Rick Weinstein
 Mr. and Mrs. Dennis W. Weisenborn
 Mr. and Mrs. John Weiss
 Ms. Colleen Welch-Conway
 Mrs. Mary A. Welge
 Mr. Thomas B. Welge
 Ms. Harriet Welland
 Mrs. Diana K. Wells
 Ms. Marva Wells
 Mr. William Welsch
 Ms. Carolyn West
 Ms. Nancy E. Weston
 Dr. and Mrs. Bruce I. White
 Mrs. Lucille J. White
 Mrs. Myrna R. White
 Mr. and Mrs. Frank T. Whitmire
 Mr. John W. Wicks
 Mrs. Patricia G. Wienstroer
 Ms. Nancy Wight
 Mrs. Susan M. Wilhelms
 Mrs. Dixie L. Wilhoit
 Mr. and Mrs. Stephen Wilkin
 Mrs. Bette J. Williams
 Mrs. Betty J. Williams
 Mr. and Mrs. Clyde L. Williams
 Mrs. Mary Beth Williams
 Ms. Mary M. Williams
 Ms. Phyllis M. Williams
 Mr. and Mrs. Ronald E. Williams
 Mrs. Evelyn M. Williamson
 Ms. Harriett Willis
 Mrs. Mildred Willis
 Mrs. Betty J. Wilson
 Mr. and Mrs. Gene Wilson
 Mrs. Marilyn K. Wilson
 Mr. and Mrs. Richard Wingerter
 Mrs. Shirley H. Wittcoff
 Ms. Janis Woehler
 Ms. Doris Wolff
 Mr. Richard J. Wolfheim

Mr. Larry R. Wolfmeier
 Mrs. Constance S. Woods
 Mr. Melvin O. Woods
 Mrs. Holly Wright
 Mr. and Mrs. Lenard Wright
 Ms. Sue Yakushiji
 Ms. Milli Yium
 Mr. and Mrs. Robert K. York
 Mr. and Mrs. Eddie R. Young
 Ms. Mary L. Young
 Mr. and Mrs. Daniel Zarazua
 Mr. Rudolph Zarek
 Mrs. Ernestine Zidzik
 Mrs. Linda Zilch
 Mrs. Vivian Zwick
 Anonymous

Thank You

20

19

Dedication

The Art of Nursing

“It’s not what you **look** at, it’s what you **see**.”

—Thoreau

It was during a hard-hat tour of the new nursing building, that St. Louis arts patrons and philanthropists Judith Aronson and Bunny Burson saw it. To most people, the unfinished atrium wall and the staked-in front patio were a rough construction zone. Aronson and Burson could visualize more.

“The arts are about healing and enabling and giving joy,” says Aronson. “This space has so many opportunities to feature the arts.” She connected the Barnes-Jewish Hospital Foundation to the Laumeier Sculpture Park she and Burson also brought in Washington University art professor Joan Hall.

Hall, a cancer survivor, was commissioned to create a new work for the Goldfarb School of Nursing at Barnes-Jewish College. Hall’s research took her to the rare books library at Washington University, where she discovered the Badinus Manuscript, an Aztec medical text of healing plants from 1552.

I was fascinated at how stylized and almost abstract these images were,” says Hall. “I thought about how the past informs the present, and the recent interest in herbal medicines and their effects.” Hall found it perfect imagery to use in the commission piece now on the atrium wall. She also used it in the donor signs and donor wall; the design of those she donated to the campaign.

The Laumeier Sculpture Park loaned the Goldfarb School of Nursing an Isaac Witkin sculpture that was a gift of Judith Aronson and her late husband, Adam. The cast bronze sculpture entitled Hawthorne Tree, now graces the outdoor entry to the new building.

There is also a new portrait of Alvin Goldfarb, done by St. Louis’ pre-eminent portrait painter, Gilbert Early. Mr. Early knows his subject well - having painted Mr. Goldfarb for the George Warren Brown School of Social Work at Washington University several years ago. The newest painting of Mr. Goldfarb depicts his clear, straight-forward gaze overseeing the lobby of the school named in his honor.

“We are so thankful that Judith and Bunny’s passion for the arts helped us enhance the look and feel of our new home,” says Dean Michael Evans. “Being able to feature the work of well-known artists is a special gift.”



Isaac Witkin
British 1936 – 2006
Hawthorne Tree
Cast Bronze

Collection of Laumeier Sculpture Park
Gift of Judith and Adam Aronson